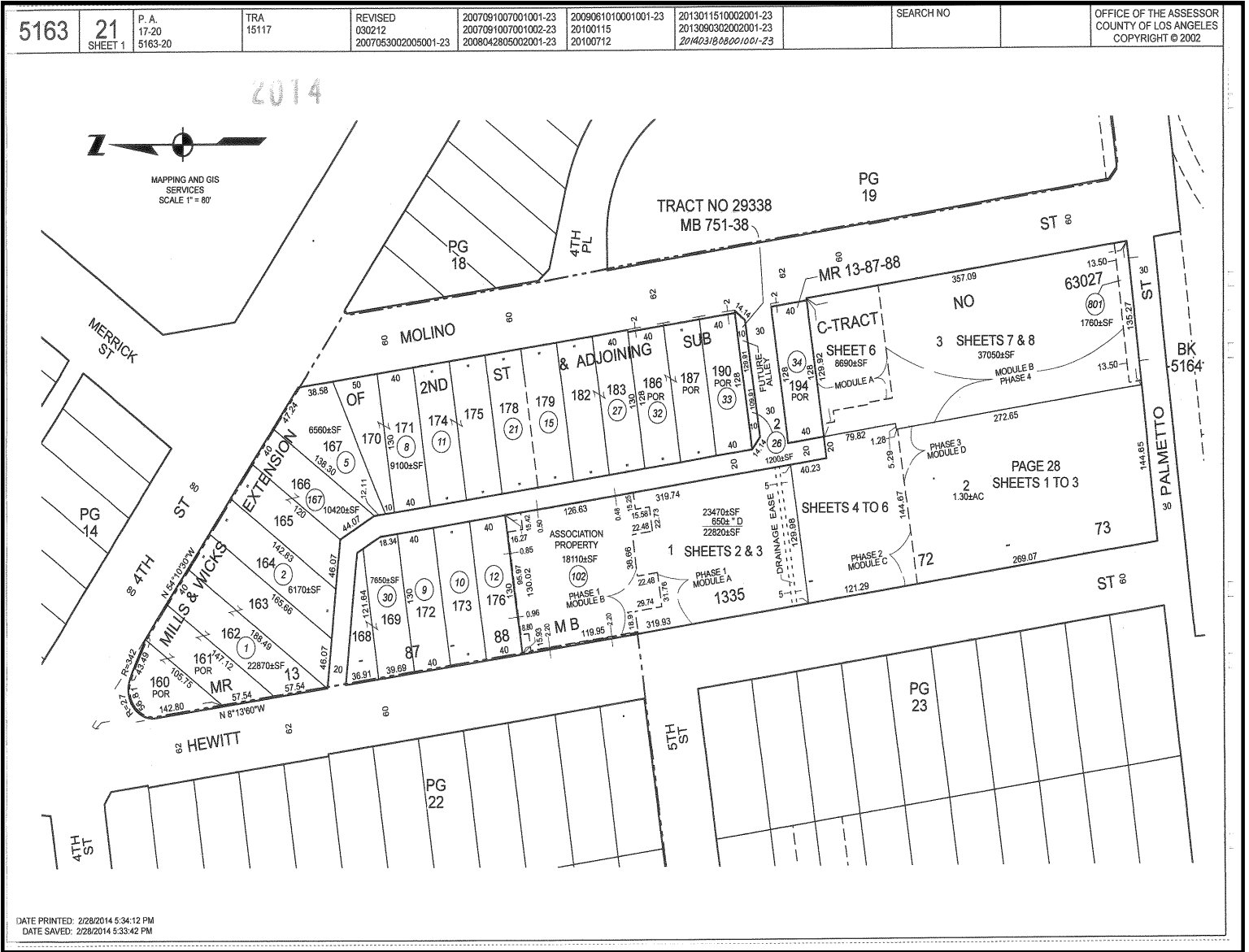




First American

myFirstAm® Tax Map

510 S Hewitt St #102, Los Angeles, CA 90013



©2005-2023 First American Financial Corporation and/or its affiliates. All rights reserved.

OFFICE OF THE ASSESSOR  
 COUNTY OF LOS ANGELES  
 COPYRIGHT © 2002

REVISED:  
 2007091007001002-23  
 2008042805-23

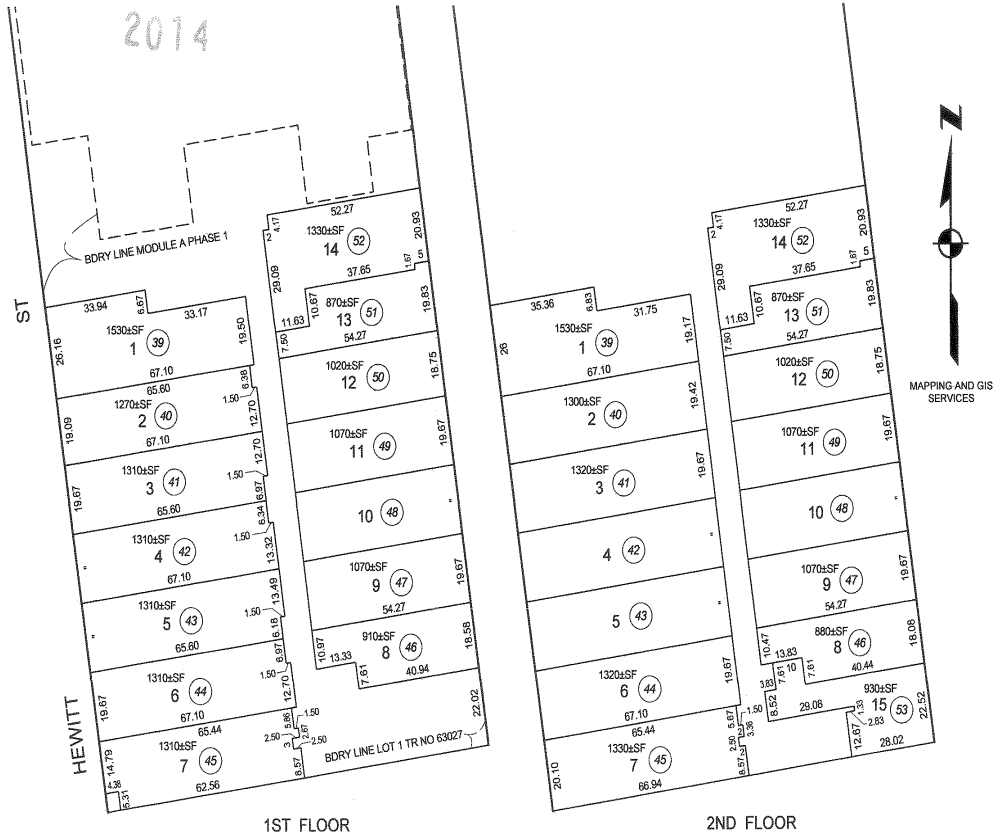
2009061010-23  
 2013090302-23  
 2014031808-23

SCALE 1" = 30'  
 SHEET 2

5163 21

THE ASSESSMENT OF UNITS IN THE FOLLOWING AIRSPACE PLANS, INCLUDES ALL RIGHTS AND INTERESTS IN THE COMMON AREAS AS SET FORTH IN DEEDS OF RECORD. EACH PLAN DEPICTS APPROXIMATE DIMENSIONS FROM WHICH AREAS ARE COMPUTED. AREAS ARE FOR CORRESPONDING ELEMENTS ONLY.

AIRSPACE PLAN REFERENCE	COMMON AREA			SUBDIVISION OF AIRSPACE SHEET(S)
	TRACT NO	BLK	LOTS	
PHASE 1 #1618456 7-9-07 AMENDED BY #1706209 7-19-07 AMENDED BY #1765232 7-26-07	63027	-	1 POR	CONDO 2, 3
PHASE 2 #432288 3-13-08	63027	-	2 POR	CONDO 4, 5, 6
PHASE 3 #673193 5-7-09	63027	-	2 POR	CONDO PAGE 28 SHTS 1, 2 & 3
MODULE A #1143667 8-5-13	63027	-	3 POR	CONDO 6
PHASE 4 #87107 1-27-14	63027	-	3 POR	CONDO 7, 8



1ST FLOOR

2ND FLOOR

SUBDIVISION OF AIRSPACE  
 CONDOMINIUM TRACT NO 63027

FOR COMMON AREA SEE SHEET 1  
 SEE RECORDED CONDOMINIUM PLAN FOR ELEVATIONS OF UNITS  
 SOME DIMENSIONS DO NOT BALANCE IN THE RECORDED CONDO PLAN

Date Printed: 2/28/2014 6:00:45 PM  
 Date Saved: 2/28/2014 6:00:32 PM

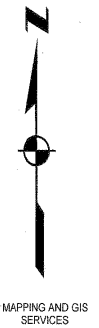
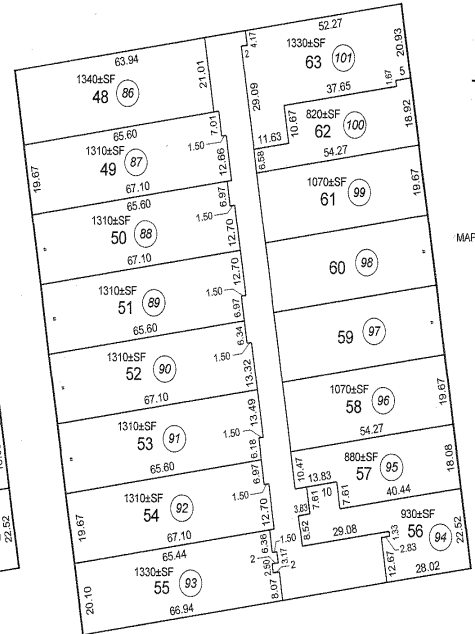
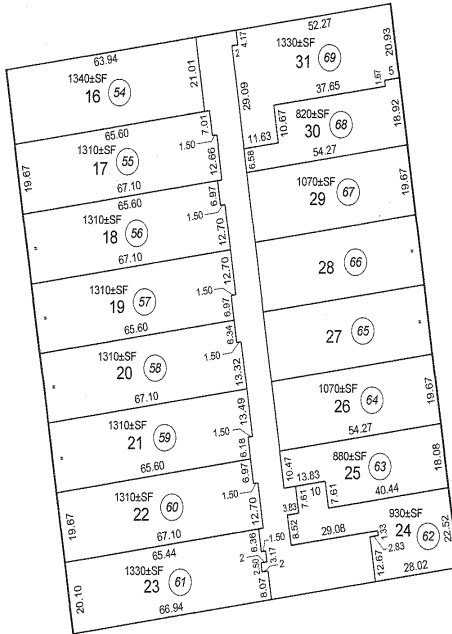
OFFICE OF THE ASSESSOR  
COUNTY OF LOS ANGELES  
COPYRIGHT © 2002

REVISED:  
2007091007001002-23  
2008042805-23

SCALE 1" = 30'  
SHEET 3

5163 21

2009



SUBDIVISION OF AIRSPACE  
CONDOMINIUM TRACT NO 63027  
FOR COMMON AREA SEE SHEET 1  
SEE RECORDED CONDO PLAN FOR ELEVATIONS OF UNITS  
SOME DIMENSIONS DO NOT BALANCE IN THE RECORDED CONDO PLAN

OFFICE OF THE ASSESSOR  
COUNTY OF LOS ANGELES  
COPYRIGHT © 2002

REVISED:  
2008042805002001-23

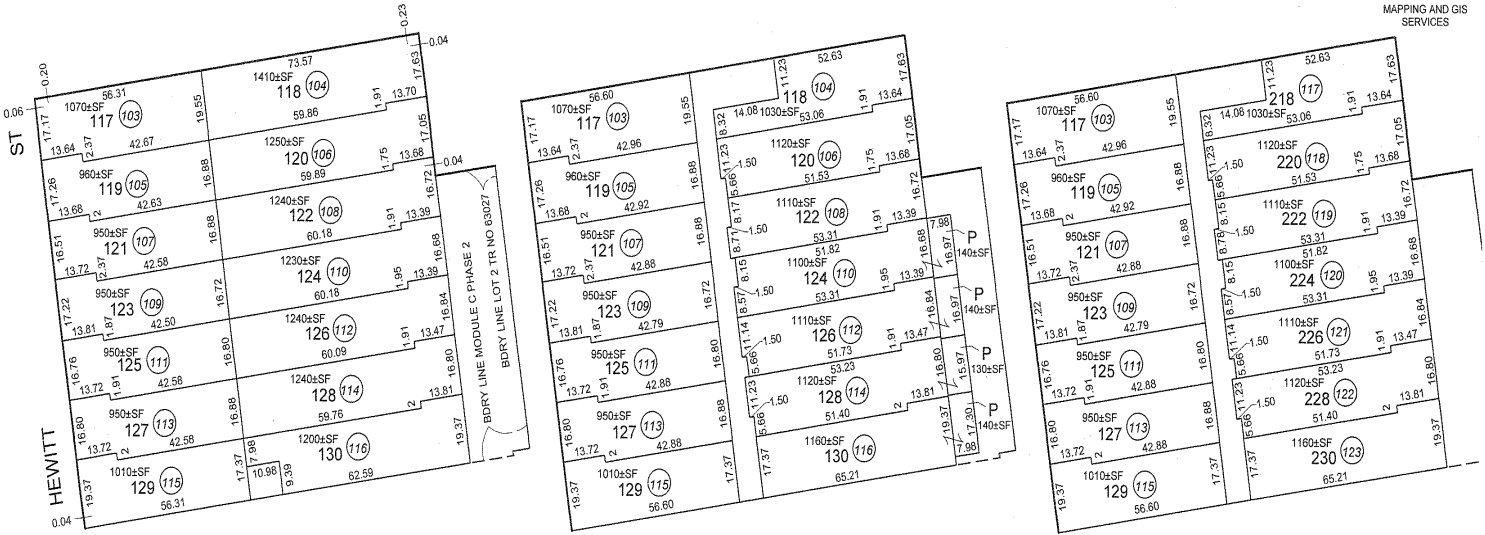
SCALE 1" = 30'  
SHEET 4

5163 21

2009



MAPPING AND GIS SERVICES



BASEMENT

1ST FLOOR

2ND FLOOR

SUBDIVISION OF AIRSPACE  
CONDOMINIUM TRACT NO 63027

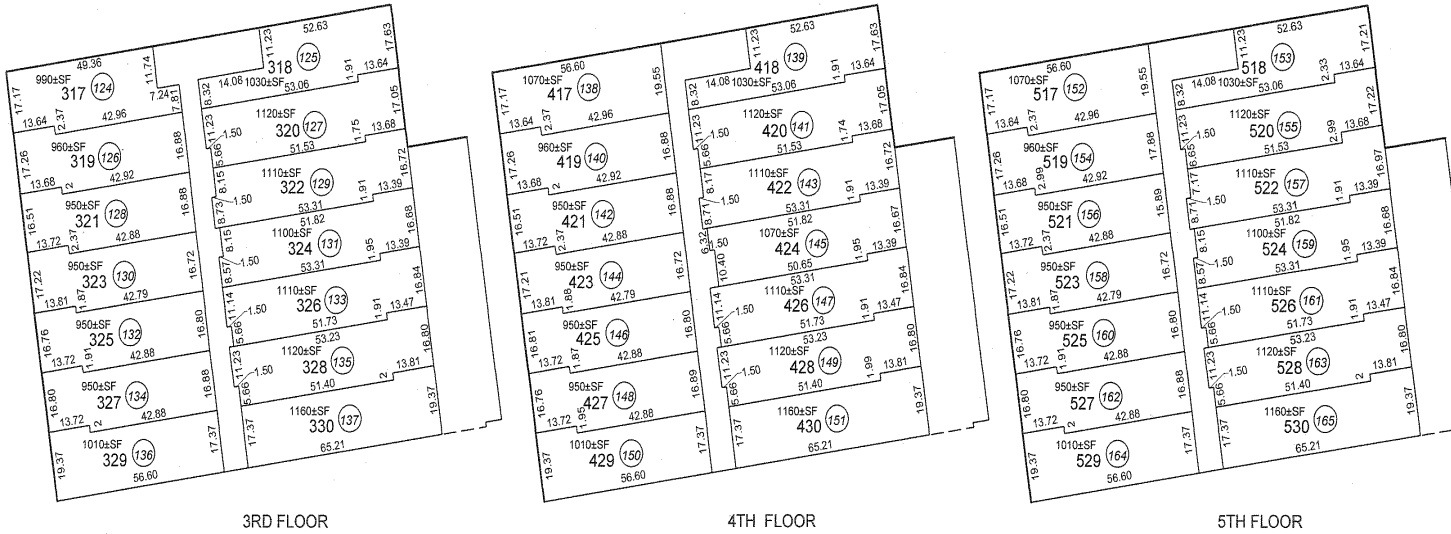
FOR COMMON AREA SEE SHEET 1  
SEE RECORDED CONDO PLAN FOR ELEVATIONS OF UNITS

OFFICE OF THE ASSESSOR COUNTY OF LOS ANGELES COPYRIGHT © 2002	REVISED: 2020042605002001-23						SCALE 1" = 30' SHEET 5	5163	21
---	---------------------------------	--	--	--	--	--	---------------------------	------	----

2009



MAPPING AND GIS SERVICES



SUBDIVISION OF AIRSPACE  
CONDOMINIUM TRACT NO 63027  
FOR COMMON AREA SEE SHEET 1  
SEE RECORDED CONDO PLAN FOR ELEVATIONS OF UNITS

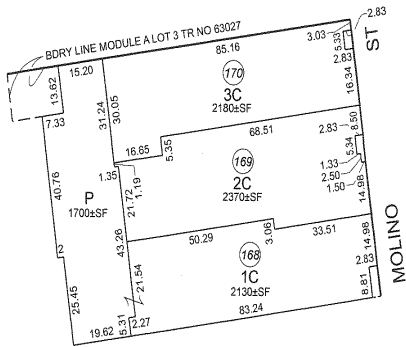
COUNTY OF LOS ANGELES  
COPYRIGHT © 2002

ZUUR042805U001-23  
2013090302002001-23

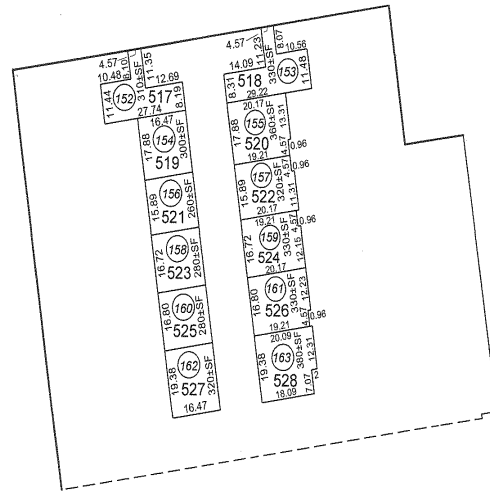
SHEET 6

5163 21

2014



1ST FLOOR



5TH / MEZZANINE

SUBDIVISION OF AIRSPACE  
CONDOMINIUM TRACT NO 63027  
FOR COMMON AREA SEE SHEET 1

SUBDIVISION OF AIRSPACE  
CONDOMINIUM TRACT NO 63027  
FOR COMMON AREA SEE SHEET 1



MAPPING AND GIS SERVICES

Date Printed: 8/28/2013 11:02:26 AM  
Date Saved: 8/28/2013 11:02:20 AM

OFFICE OF THE ASSESSOR  
COUNTY OF LOS ANGELES  
COPYRIGHT © 2002

REVISED:  
2014031808001001-23

SCALE 1" = 30'  
SHEET 7

5163 21



2014

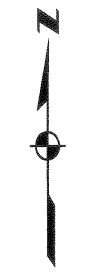
PALMETTO ST

ST

MOLINO ST

1ST FLOOR

2ND FLOOR



MAPPING AND GIS SERVICES

SUBDIVISION OF AIRSPACE  
CONDOMINIUM TRACT NO 63027

FOR COMMON AREA SEE SHEET 1  
SEE RECORDED CONDOMINIUM PLAN FOR ELEVATIONS OF UNITS  
SOME TIE DIMENSIONS ARE MISSING IN THE RECORDED CONDO PLAN  
ELEMENT P-8 ENCROACHES UPON PARCEL 801

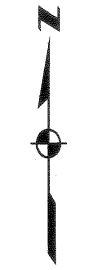
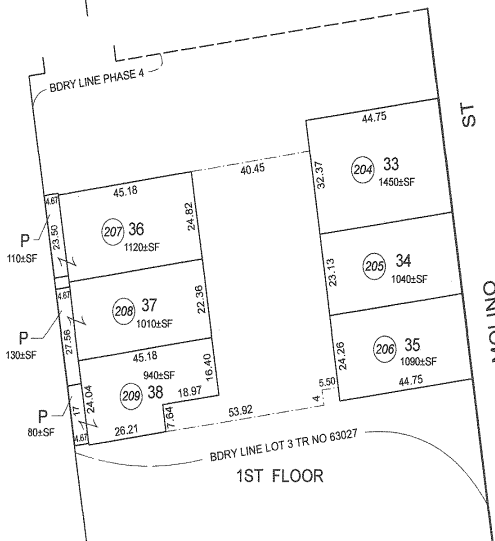
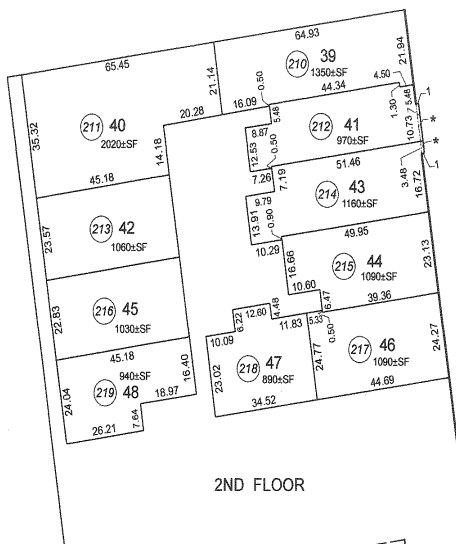
DATE PRINTED: 3/14/2014 2:15:46 PM  
DATE SAVED: 3/14/2014 2:15:27 PM

OFFICE OF THE ASSESSOR  
COUNTY OF LOS ANGELES  
COPYRIGHT © 2002

REVISED:  
2014031808001001-23

SCALE 1" = 30'  
SHEET 8

5163 21



MAPPING AND GIS SERVICES

**SUBDIVISION OF AIRSPACE  
CONDOMINIUM TRACT NO 63027**

FOR COMMON AREA SEE SHEET 1  
SEE RECORDED CONDOMINIUM PLAN FOR ELEVATIONS OF UNITS  
SOME TIE DIMENSIONS ARE MISSING IN THE RECORDED CONDO PLAN  
\* REPRESENTS PORTIONS OF UNITS THAT OVERHANG ON A PUBLIC STREET

DATE PRINTED: 3/14/2014 2:37:32 PM  
DATE SAVED: 3/14/2014 2:37:28 PM

Limitation of Liability for Informational Report

**IMPORTANT – READ CAREFULLY:** THIS REPORT IS NOT AN INSURED PRODUCT OR SERVICE OR A REPRESENTATION OF THE CONDITION OF TITLE TO REAL PROPERTY. IT IS NOT AN ABSTRACT, LEGAL OPINION, OPINION OF TITLE, TITLE INSURANCE COMMITMENT OR PRELIMINARY REPORT, OR ANY FORM OF TITLE INSURANCE OR GUARANTY. THIS REPORT IS ISSUED EXCLUSIVELY FOR THE BENEFIT OF THE APPLICANT THEREFOR, AND MAY NOT BE USED OR RELIED UPON BY ANY OTHER PERSON. THIS REPORT MAY NOT BE REPRODUCED IN ANY MANNER WITHOUT FIRST AMERICAN'S PRIOR WRITTEN CONSENT. FIRST AMERICAN DOES NOT REPRESENT OR WARRANT THAT THE INFORMATION HEREIN IS COMPLETE OR FREE FROM ERROR, AND THE INFORMATION HEREIN IS PROVIDED WITHOUT ANY WARRANTIES OF ANY KIND, AS-IS, AND WITH ALL FAULTS. AS A MATERIAL PART OF THE CONSIDERATION GIVEN IN EXCHANGE FOR THE ISSUANCE OF THIS REPORT, RECIPIENT AGREES THAT FIRST AMERICAN'S SOLE LIABILITY FOR ANY LOSS OR DAMAGE CAUSED BY AN ERROR OR OMISSION DUE TO INACCURATE INFORMATION OR NEGLIGENCE IN PREPARING THIS REPORT SHALL BE LIMITED TO THE FEE CHARGED FOR THE REPORT. RECIPIENT ACCEPTS THIS REPORT WITH THIS LIMITATION AND AGREES THAT FIRST AMERICAN WOULD NOT HAVE ISSUED THIS REPORT BUT FOR THE LIMITATION OF LIABILITY DESCRIBED ABOVE. FIRST AMERICAN MAKES NO REPRESENTATION OR WARRANTY AS TO THE LEGALITY OR PROPRIETY OF RECIPIENT'S USE OF THE INFORMATION HEREIN.